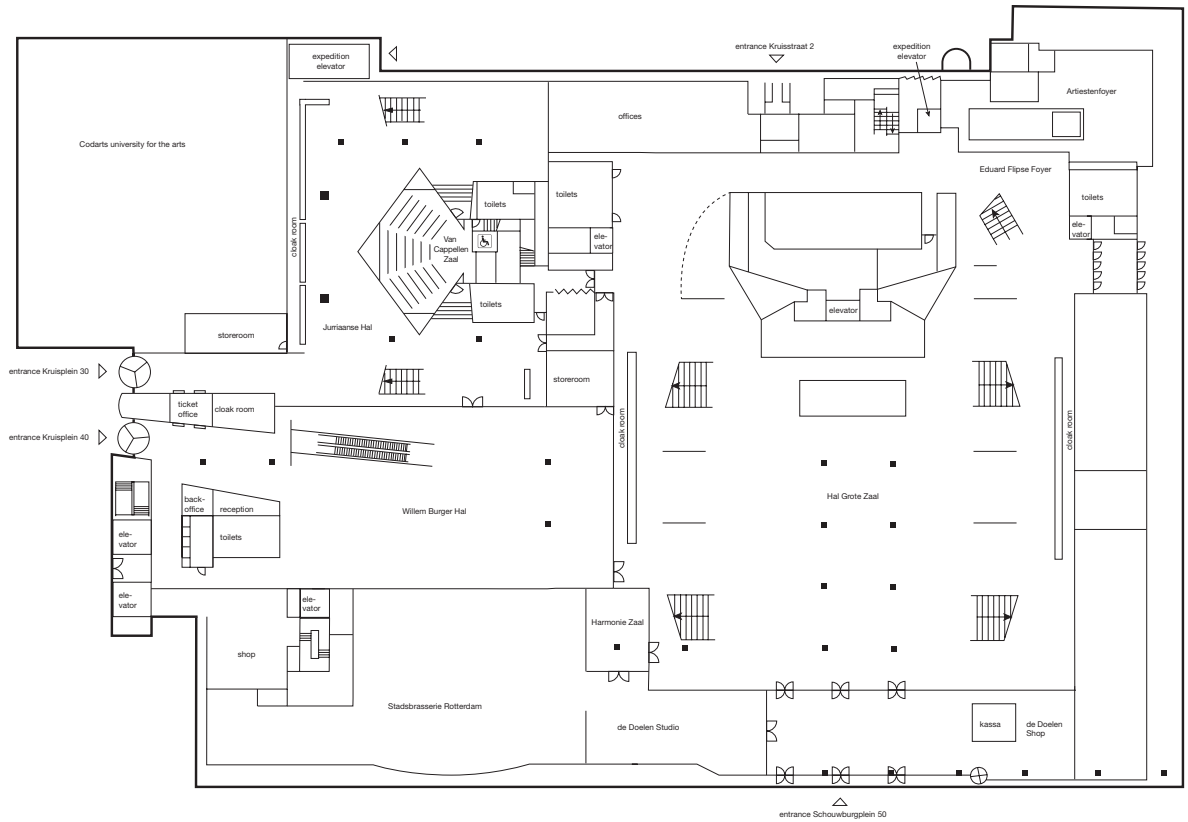
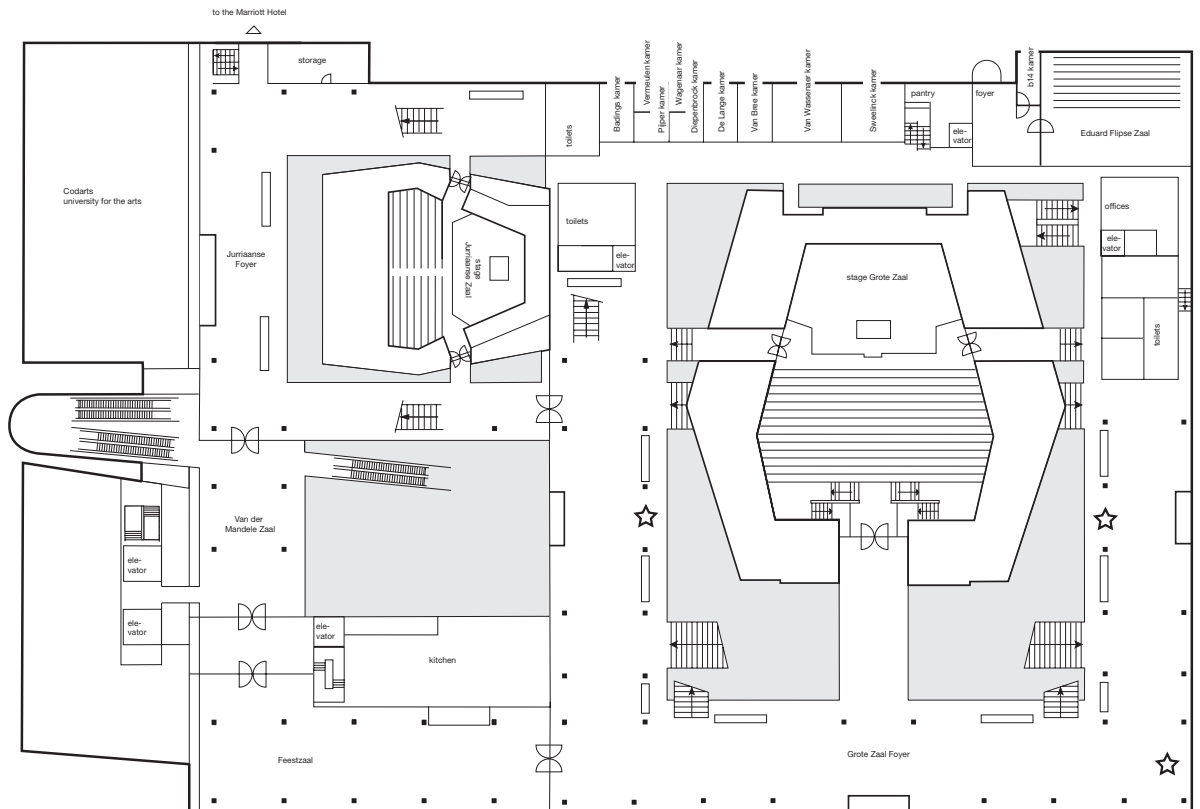


# floor plan

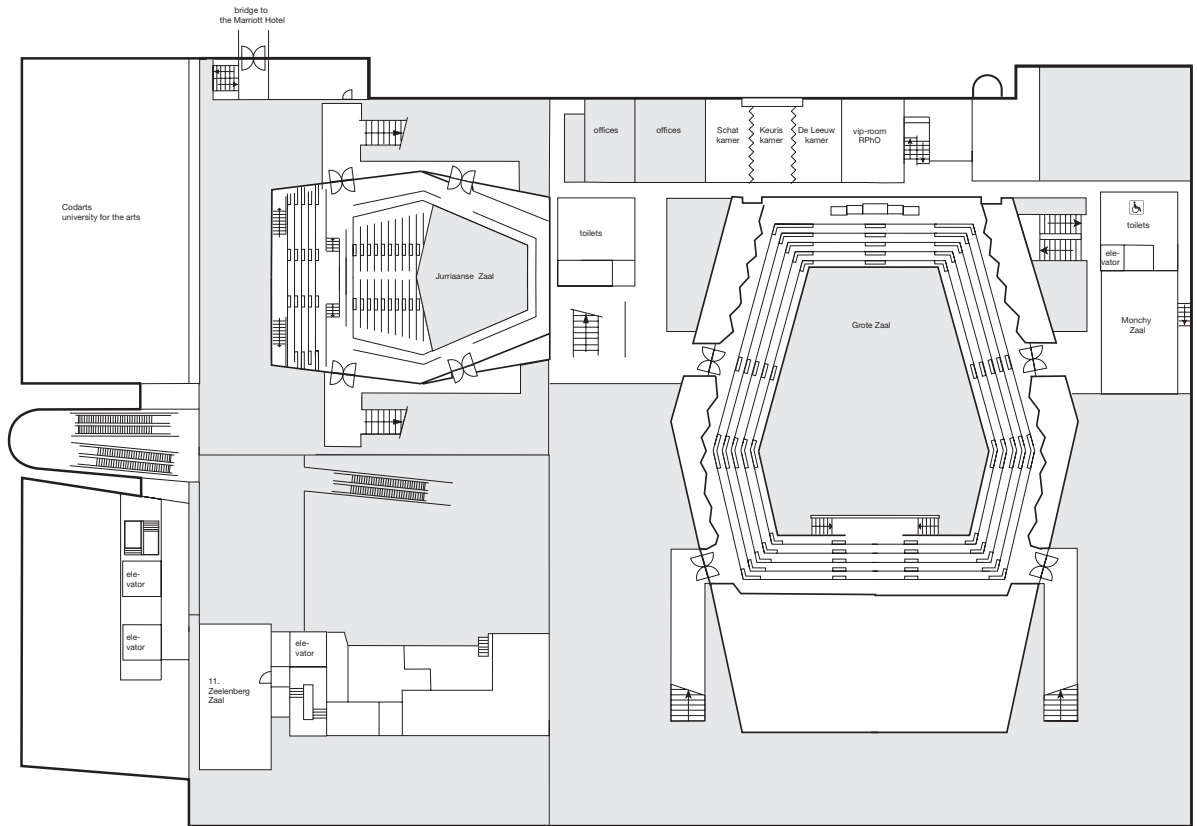
## ground floor



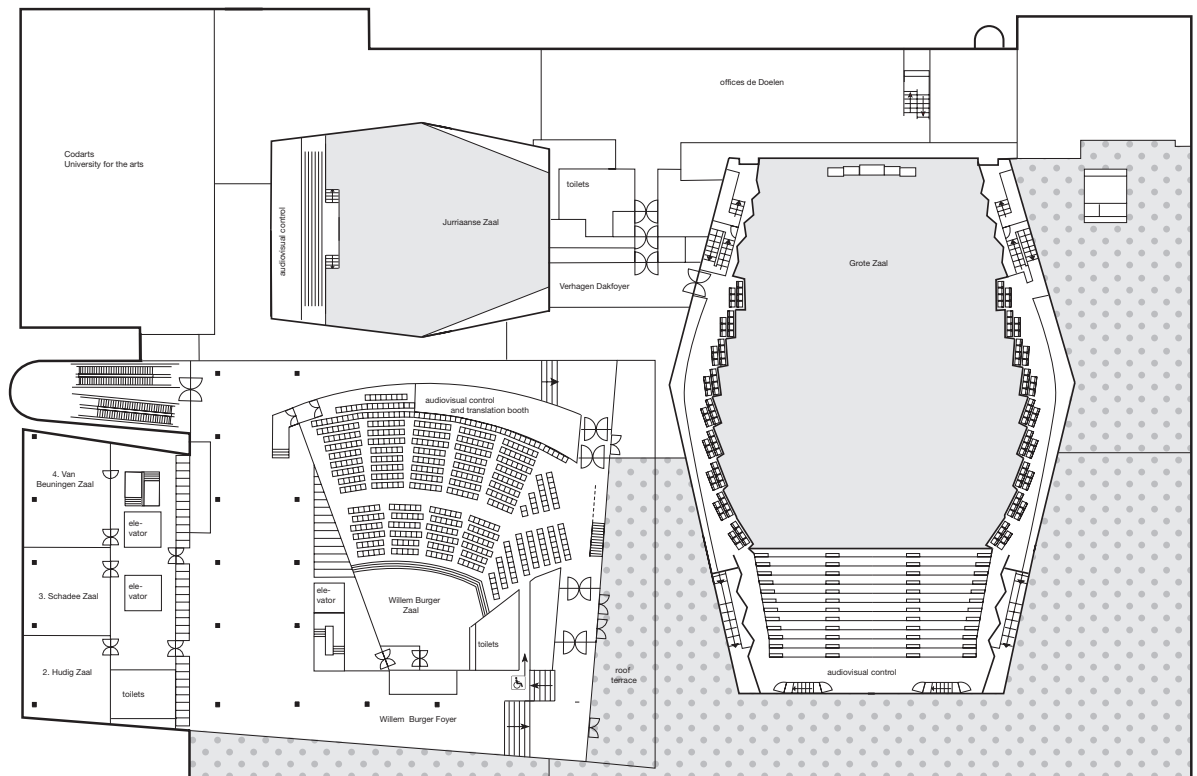
## first floor



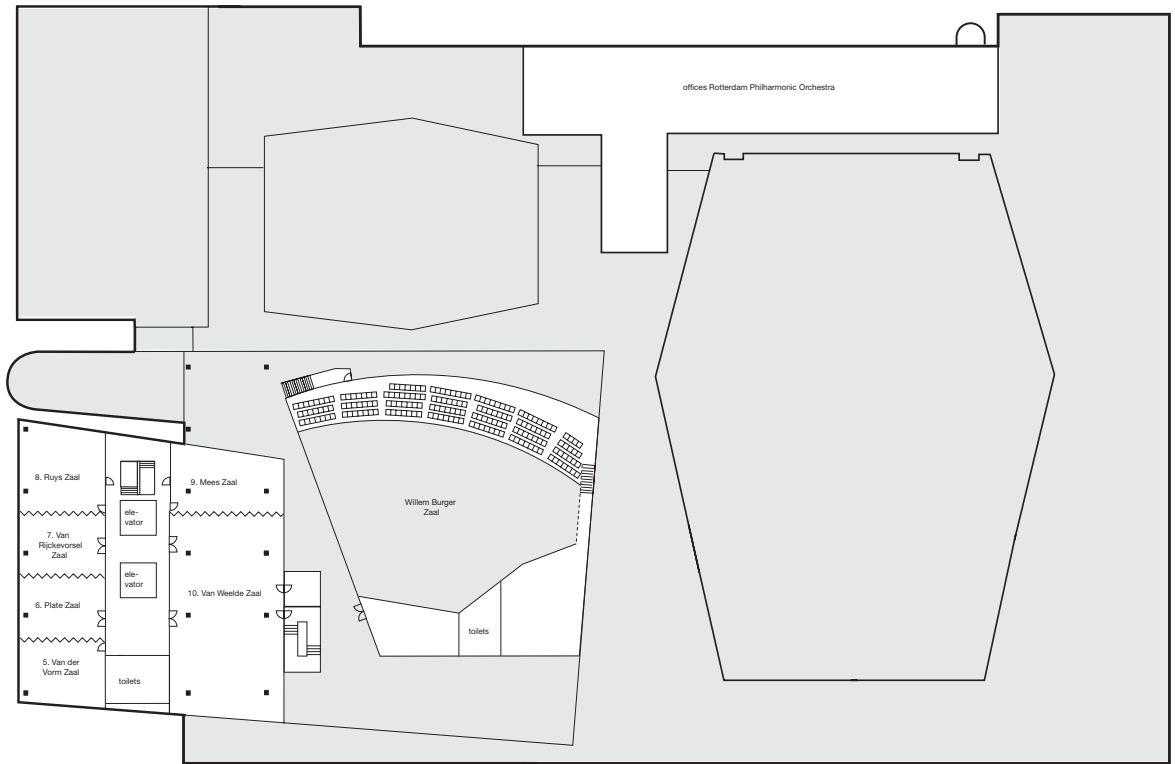
## second floor



## third floor



fourth floor

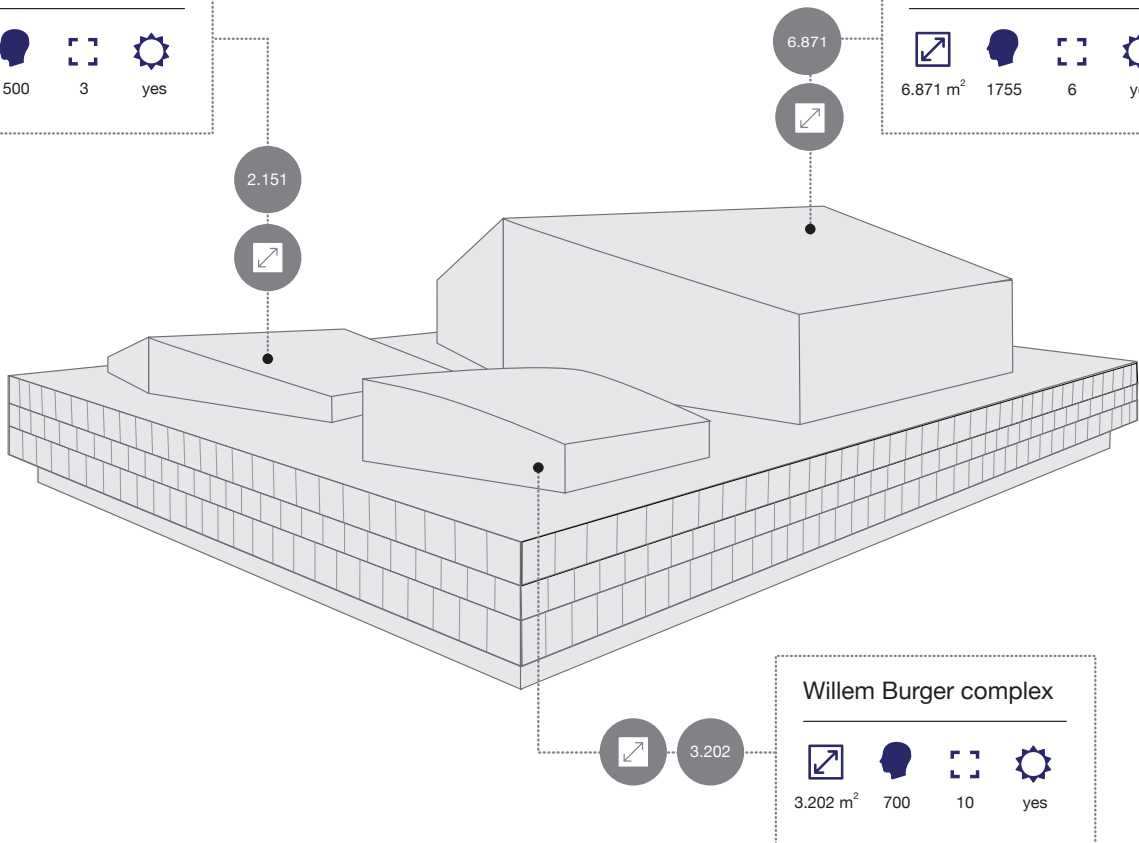


**Jurriaanse complex**

- 2.151 m<sup>2</sup>
- 500
- 3
- yes

**Grote Zaal complex**

- 6.871
- 6.871 m<sup>2</sup>
- 1755
- 6
- yes



3.202

**Willem Burger complex**

- 3.202 m<sup>2</sup>
- 700
- 10
- yes

# capacity table

	measurement	l x w	height	cabaret	u-shape	classroom	theatre	dinner	reception	blokken	daylight
Grote Zaal	2400 m <sup>2</sup>	-	19 m	-	-	-	1755	-	-	-	nee
Grote Zaal Foyer	1400 m <sup>2</sup>	-	7 m	-	-	-	-	800	1500	-	ja
Hal Grote Zaal	2320 m <sup>2</sup>	-	2,5-5 m	-	-	-	-	900	1100	-	ja
Verhagen Dakfoyer	84 m <sup>2</sup>	12 x 7 m	3 m	36	24	24	60	40	60	-	ja
Jurriaanse Zaal	532 m <sup>2</sup>	-	11 m	-	-	-	465	-	-	-	nee
Jurriaanse Foyer	700 m <sup>2</sup>	-	7 m	-	-	-	-	400	500	-	ja
Jurriaanse Hal	690 m <sup>2</sup>	-	2,94 m	-	-	-	-	100	200	-	ja
Van Cappellen Zaal	150 m <sup>2</sup>	-	3,5 m	-	-	-	142	-	-	-	nee
Feestzaal	456 m <sup>2</sup>	38 x 12 m	7 m	116	60	128	252	200	450	120	ja
Van der Mandele Zaal	209 m <sup>2</sup>	11 x 19 m	7 m	-	-	-	-	50	90	-	ja
Eduard Flipse Zaal	216 m <sup>2</sup>	12 x 18 m	7 m	52	58	56	180	70	-	-	ja
Monchy Zaal	91 m <sup>2</sup>	7 x 13 m	2,8 m	40	26	30	72	50	72	60	nee
De Leeuw Kamer*	28 m <sup>2</sup>	5 x 5 m	2,8 m	10	12	-	18	-	-	-	ja
Keuris Kamer*	23 m <sup>2</sup>	5 x 4 m	2,8 m	6	6	-	12	-	-	-	ja
Schat Kamer*	28 m <sup>2</sup>	5 x 5 m	2,8 m	10	12	-	18	-	-	-	ja
Congrescomplex											
Willem Burger Zaal	710 m <sup>2</sup>	-	7,50 m	-	-	-	700	-	-	-	ja
2. Hudig Zaal	80 m <sup>2</sup>	9 x 9 m	3,60 m	24	20	24	60	30	60	39	ja
3. Schadee Zaal	90 m <sup>2</sup>	9 x 10 m	3,60 m	24	20	24	60	40	60	39	ja
4. Van Beuningen Zaal	115 m <sup>2</sup>	9 x 13 m	3,60 m	32	22	24	63	60	63	40	ja
5. Van der Vorm Zaal*	70 m <sup>2</sup>	10 x 7 m	4,75 m	20	12	16	33	25	-	20	ja
6. Plate Zaal*	60 m <sup>2</sup>	10 x 6 m	4,75 m	20	14	16	40	30	-	20	ja
7. Van Rijkevorsel Zaal*	60 m <sup>2</sup>	10 x 6 m	4,75 m	20	14	16	40	30	-	20	ja
8. Ruys Zaal*	100 m <sup>2</sup>	10 x 10 m	4,75 m	24	16	24	40	40	-	20	ja
9. Mees Zaal*	90 m <sup>2</sup>	13 x 7 m	4,75 m	20	14	20	56	-	-	30	ja
10. Van Weelde Zaal*	300 m <sup>2</sup>	13 x 23 m	4,75 m	84	48	100	210	120	210	120	ja
11. Zeelenberg Zaal	98 m <sup>2</sup>	7 x 14 m	2,70 m	36	24	28	77	-	-	50	ja
Willem Burger Foyer	540 m <sup>2</sup>	-	3,30-9,30 m	-	-	-	-	280	400	-	ja
Willem Burger Hal	680 m <sup>2</sup>	36 x 19 m	8,20 m	-	-	-	-	350	500	-	ja

\* deze zalen kunnen geschakeld worden